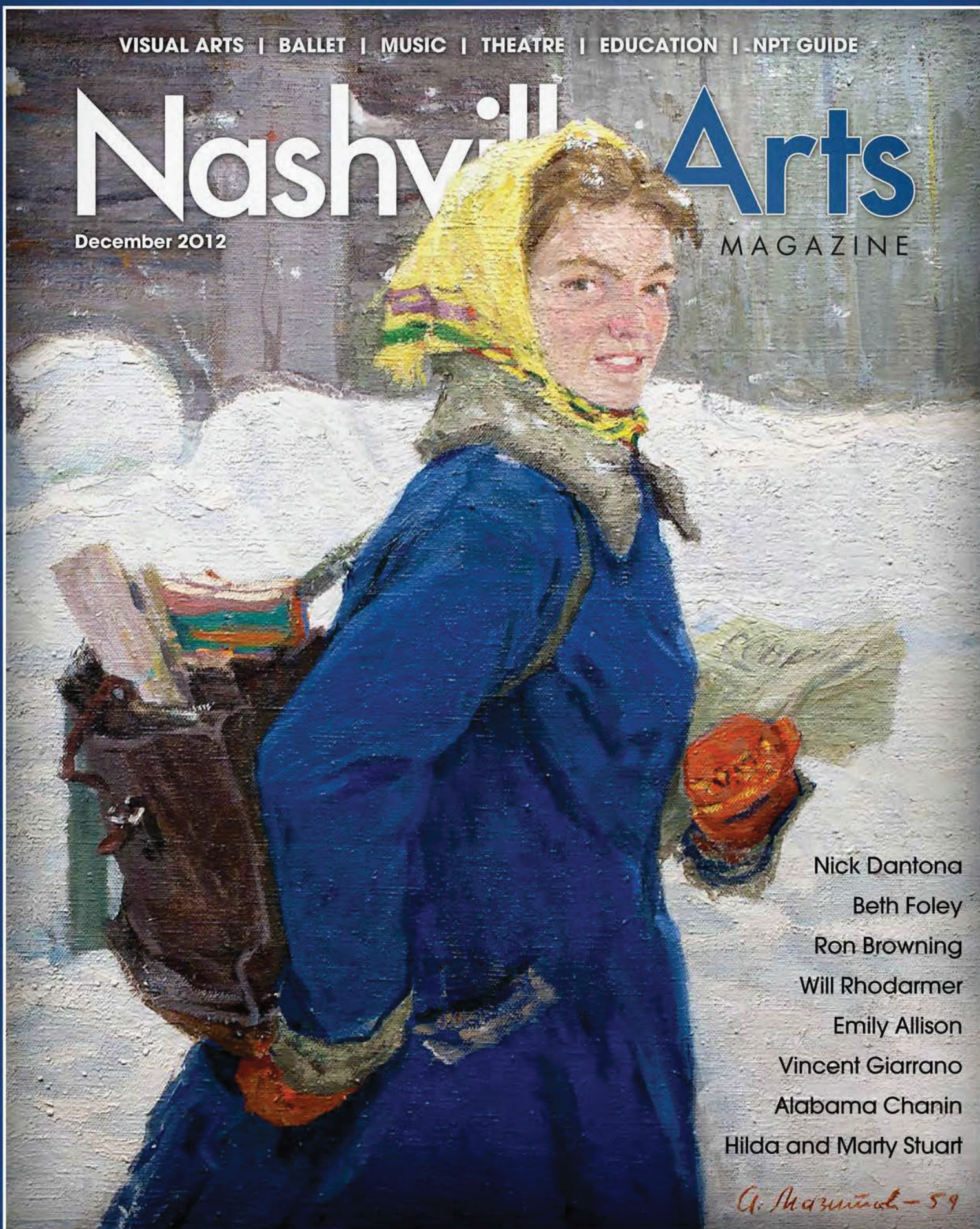


VISUAL ARTS | BALLET | MUSIC | THEATRE | EDUCATION | NPT GUIDE

Nashville Arts

December 2012

MAGAZINE



Nick Dantona

Beth Foley

Ron Browning

Will Rhodarmer

Emily Allison

Vincent Giarrano

Alabama Chanin

Hilda and Marty Stuart

G. Mazzuca - 59

The Artist Event
You Have Been Waiting For...

Holiday Trunk Show

Featuring

JULIE SHAW



DEBE DOHRER



Fill Her Jewelry Box...

December 15
11am - 6pm

**LeQuire
& Company**

3900 Hillsboro Pike, Suite 34 • Nashville, TN 37215
615-739-6573 • info@lequireandcompany.com



Flight, 2011, Mixed media, 24" x 48"

Beth English

by Joe Pagetta

Growing up in Port Arthur, Texas, artist Beth English dreamed of attending the University of Texas in Austin, and her dream came true. While there studying business and taking the odd design class, she began to feel the tug of her second dream of living on a tropical island. And so she became a scuba diving instructor and, a few years after college, got a job working in the Bahamas and then St. Croix. When an accident intervened, she decided it was time for her third dream: to be an artist.

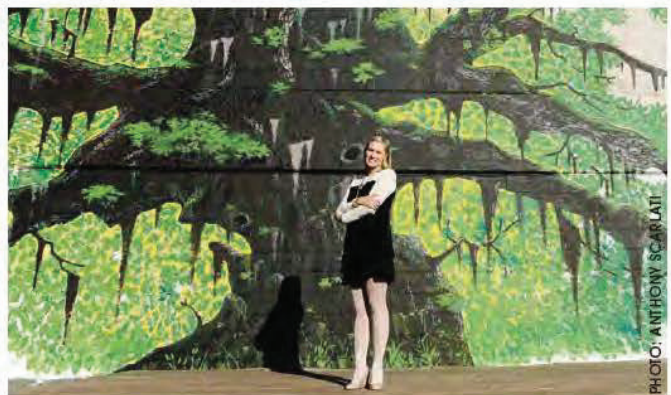
So it's no surprise that when English planted the seed in her mind to do more public art and paint a public mural in Nashville, it wouldn't take long for it to happen. The fruition of that dream now resides atop the McKendree Christian Life Center in downtown Nashville, a 20' x 75' mural of a southern live oak—gridded, drawn, and then painted over two weekends with the help of a cross section of the community.

"I love urban art and street art," says English. "And they [McKendree] said it before I could say it. So I thought let's let this exposed brick show through, and let's do something more urban and street inspired, and let's do a tree because this is an organic garden and event space. It has to work across so many different scenarios."

The nature of the space, considerably wider than it was tall, inspired the tree choice. "Southern live oaks are beautiful," English adds. "They're old, and their limbs are so heavy that they drop to the ground, and they have this thick moss that just hangs over their limbs. I really wanted it to just cool off the space, just be this old oak tree that looks like it's been here forever."

While access to the rooftop is limited to guests of the McKendree United Methodist Church and Christian Life Center, fortunate passersby can grab a glimpse from various street-level vantage points on 5th Avenue and Church Street.

For more on Beth, visit www.binglishart.com.



Tree of Life, 2012, Exterior paint on concrete, 20' x 75'